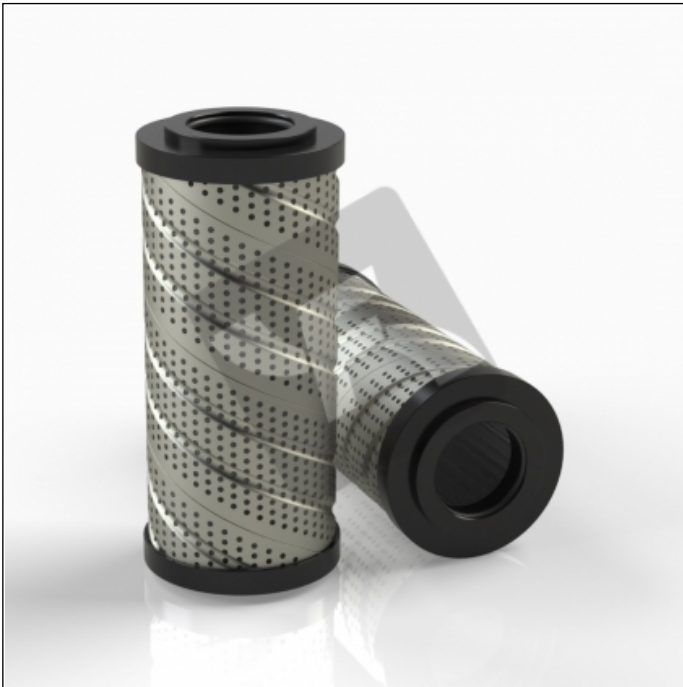


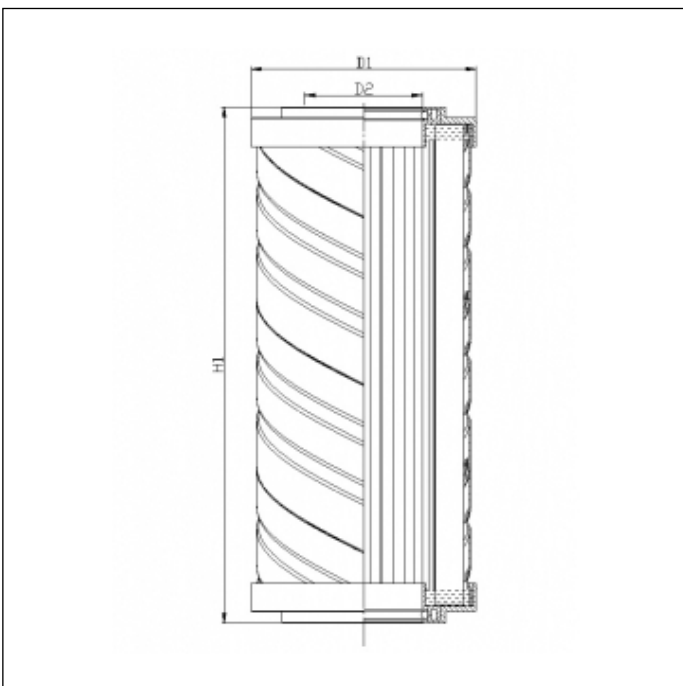
## S741T25

printed on: 06-07-2026



### TECHNICAL INFO

Media type	WIRE MESH
Efficiency	25 µm
Flow direction	IN-OUT
Burst $\Delta p$	3 bar
Seals	NBR
Temperature range	-30°C +100°C



### OVERALL DIMENSIONS

D1	99,0 mm
D2	51,5 mm
H1	227,0 mm

Technical information may change without notice. Image and drawing are representative only