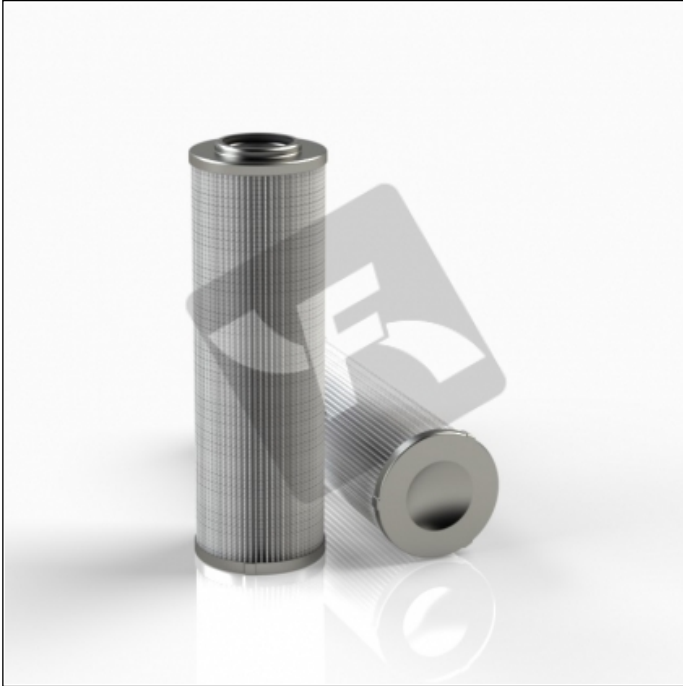


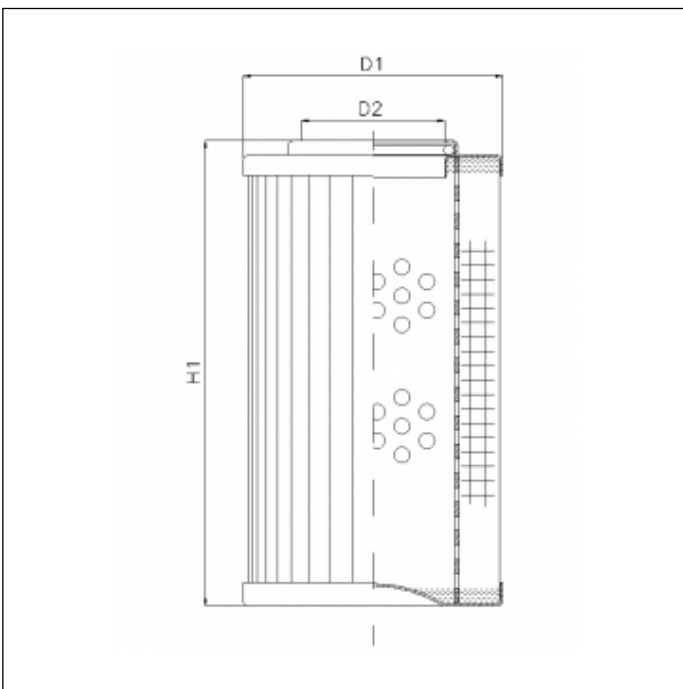
XD040G10A

printed on: 09-02-2025



TECHNICAL INFO

| | |
|---------------------|--|
| Media type | INORGANIC FIBERGLASS |
| Efficiency | 10 $\mu\text{m}_{(c)}$ $\beta_x \geq 200$ |
| Efficiency 1 | 12 $\mu\text{m}_{(c)}$ $\beta_x \geq 1000$ |
| Flow direction | OUT-IN |
| Collapse Δp | 21 bar |
| Seals | NBR |
| Temperature range | -30°C +100°C |



OVERALL DIMENSIONS

| | |
|----|---------|
| D1 | 44,5 mm |
| D2 | 22,3 mm |
| H1 | 98,0 mm |