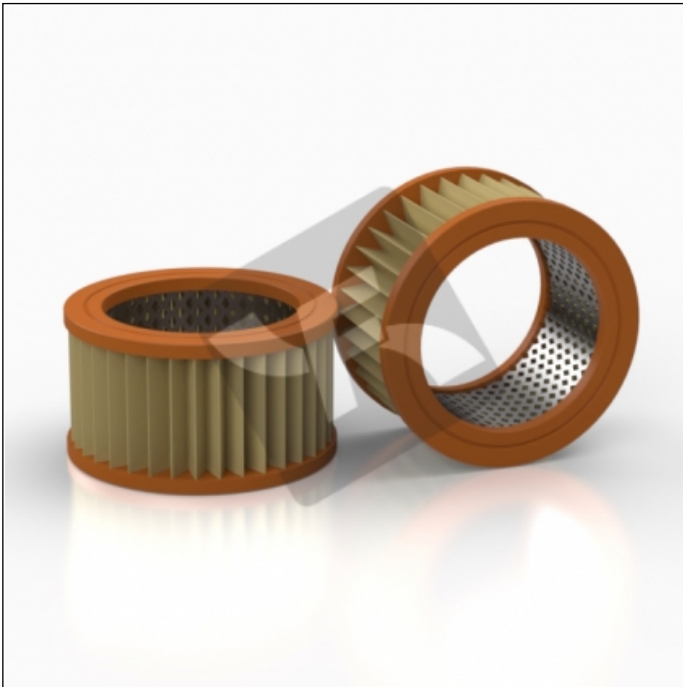


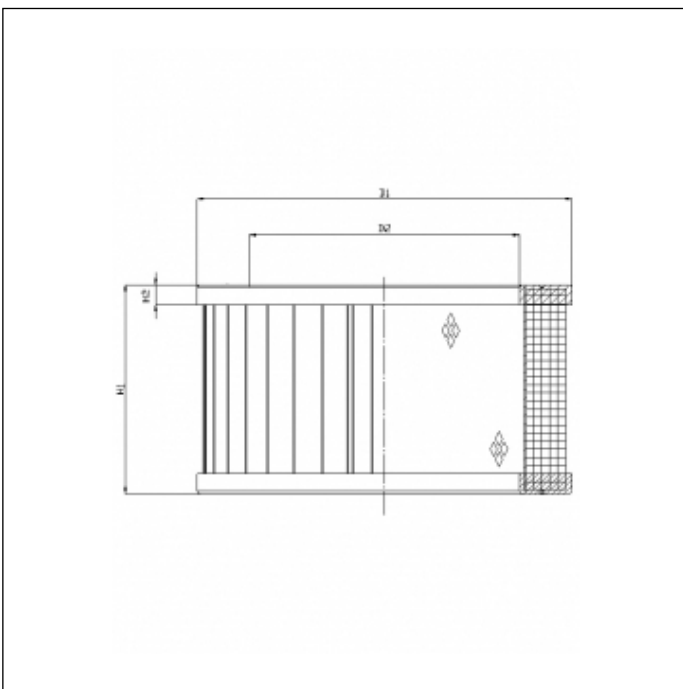
WP870

printed on: 07-04-2025



TECHNICAL INFO

Media type	IMPREGNATED PAPER
Efficiency	3 µm
Flow direction	OUT-IN
Collapse Δp	1 bar
Seals	PLASTISOL
Temperature range	-30°C +100°C
Note	BREATHER FILTER



OVERALL DIMENSIONS

D1	131,0 mm
D2	94,5 mm
H1	73,0 mm
H3	7,0 mm