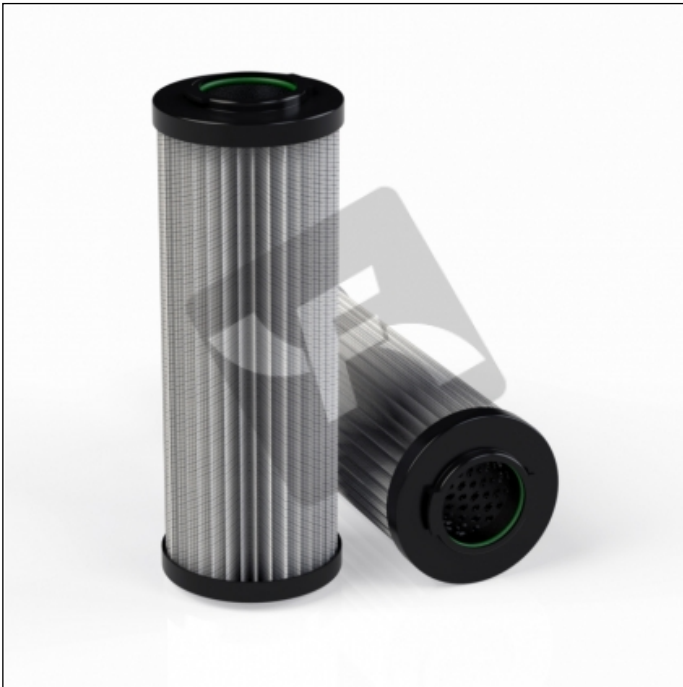


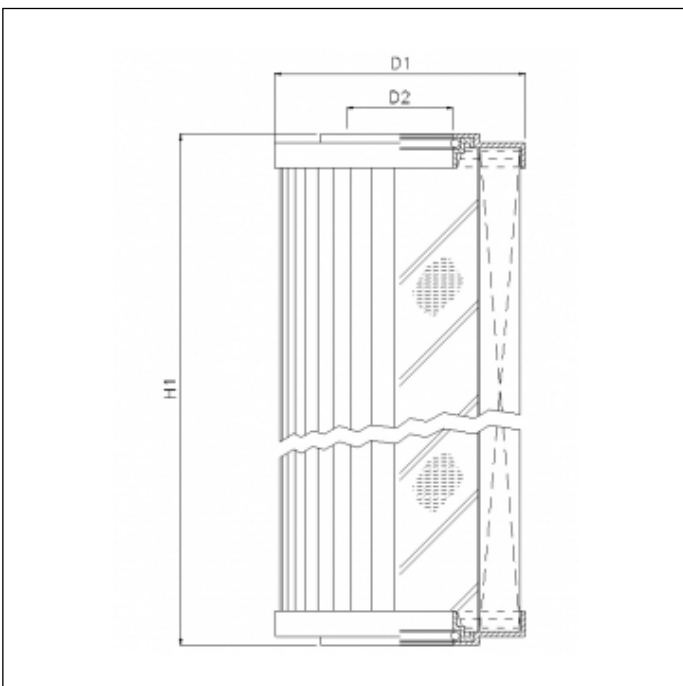
## WG681

printed on: 25-02-2025



### TECHNICAL INFO

Media type	INORGANIC FIBERGLASS
Efficiency	10 $\mu\text{m}_{(c)}$ $\beta_x \geq 200$
Efficiency 1	12 $\mu\text{m}_{(c)}$ $\beta_x \geq 1000$
Flow direction	OUT-IN
Collapse $\Delta p$	30 bar
Seals	FKM
Temperature range	-30°C +100°C



### OVERALL DIMENSIONS

D1	94,5 mm
D2	48,1 mm
H1	265,0 mm