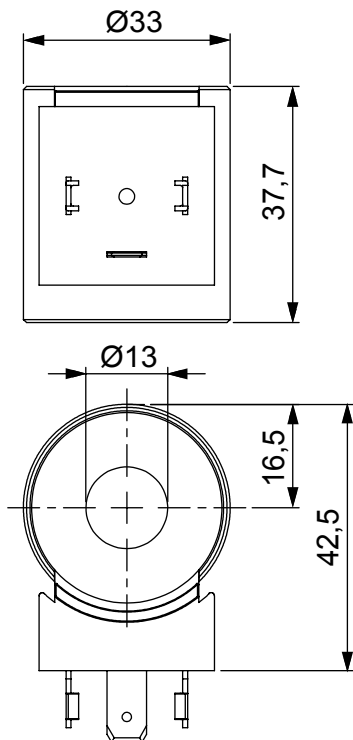


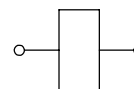
COIL - TUBE Ø 13

20,5 W

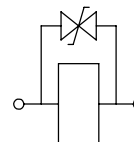
- Wire insulation class.....H (>185°C)
- ED.....100%
- Coil power at 20° C.....20,5 W
- Ambient temperature.....-20 +40° C
- Weight.....0,16 Kg



ELECTRIC CIRCUITS



STANDARD



**WITH DIODE
(BI-DIRECTIONAL)**

Note:
- Coil interchangeable with CT-9200 model.

268

CONNECTOR	PROTECTION CLASS	COIL THERMAL INSULATION CLASS	VOLTAGE [V]	RESISTANCE [Ω]	CIRCUIT	ORDERING CODE
DIN 43650	IP65*	F	12 V dc	7	STANDARD	094001000
DIN 43650	IP65*	F	24 V dc	28	STANDARD	094002000
DEUTSCH DT 4	IP67	F	12 V dc	7	WITH DIODE	094101000
DEUTSCH DT 4	IP67	F	24 V dc	28	WITH DIODE	094102000
AMP - JUNIOR	IP65*	F	12 V dc	7	STANDARD	094201000
AMP - JUNIOR	IP65*	F	24 V dc	28	STANDARD	094202000

* Protection index with standard connector